

# Board of Directors

From  
01 May 2024

## Non Executive Directors

**Acting Chair**  
Michael Watts

**Non Executive Director**  
Stephanie Elsy

**Non Executive Director**  
Gaurav Kumar

**Non Executive Director**  
David Kelham

**Non Executive Director**  
Vanessa Avlonitis

## Executive Team – voting members

**Interim Chief Executive**  
**(Accountable Officer for Solent and Southern)**  
Ron Shields

**Chief of Nursing and Allied Health Professionals**  
Angela Anderson

**Chief Finance Officer**  
Nikki Burnett

**Deputy CEO and Chief Medical Officer**  
Dr Dan Baylis

## Executive Team – non voting members

**Chief Strategy & Transformation Officer**  
Debbie James

**Chief Operating Officer**  
Alasdair Snell

**Acting Chief People Officer**  
Sorrelle Ford

**On secondment as Chief Integration Officer**  
**(for the new organisation Hampshire and Isle of Wight Healthcare NHS Foundation Trust)**  
Andrew Strevens

**Executive Team Structure**

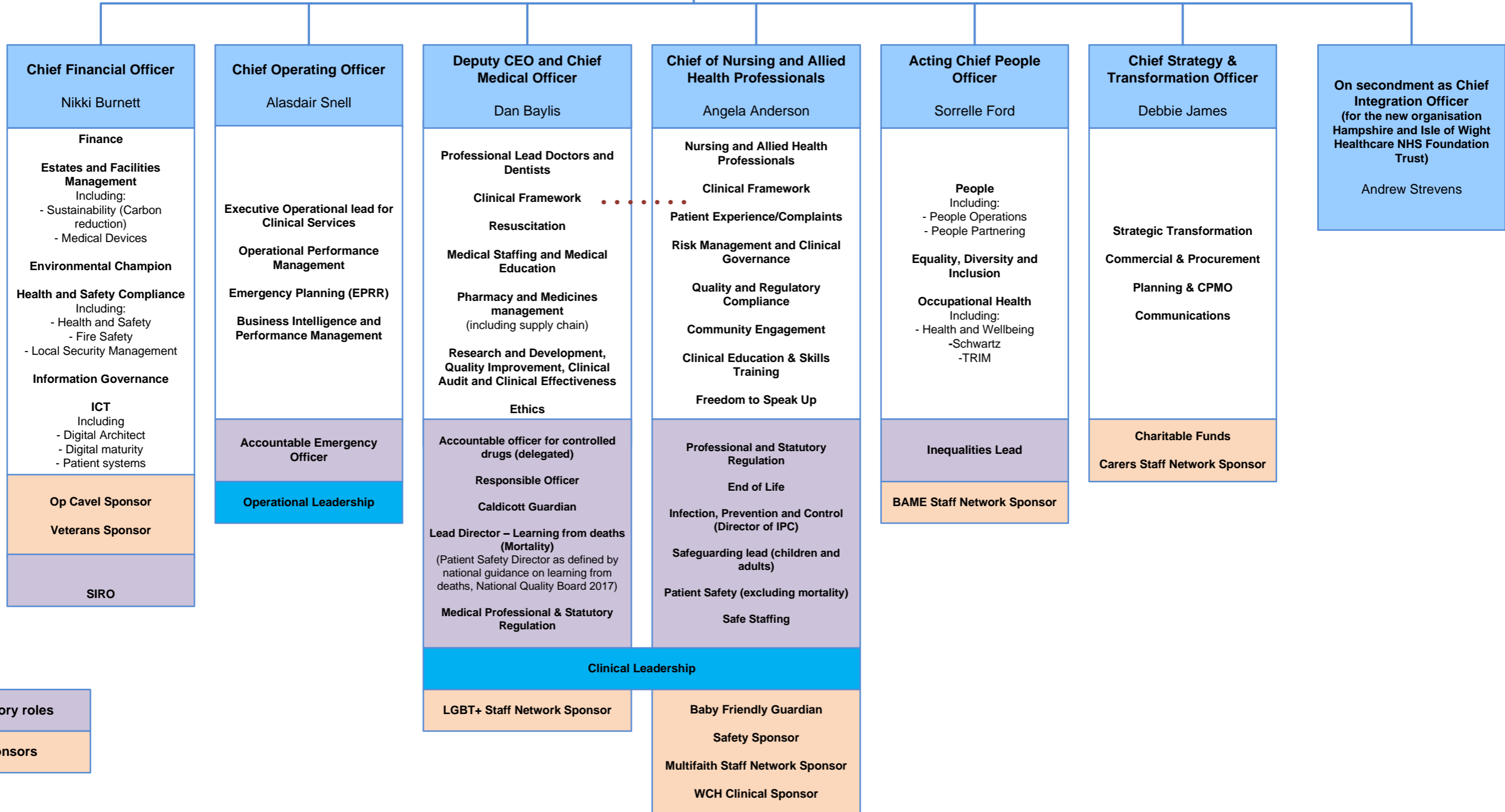
June 2024

**Interim Chief Executive**  
 Ron Shields

Strategy  
 Organisational Development  
 Corporate Governance  
 Corporate Affairs

Accountable Officer

DisAbility Staff Network Sponsor  
 50+Staff Network Sponsor

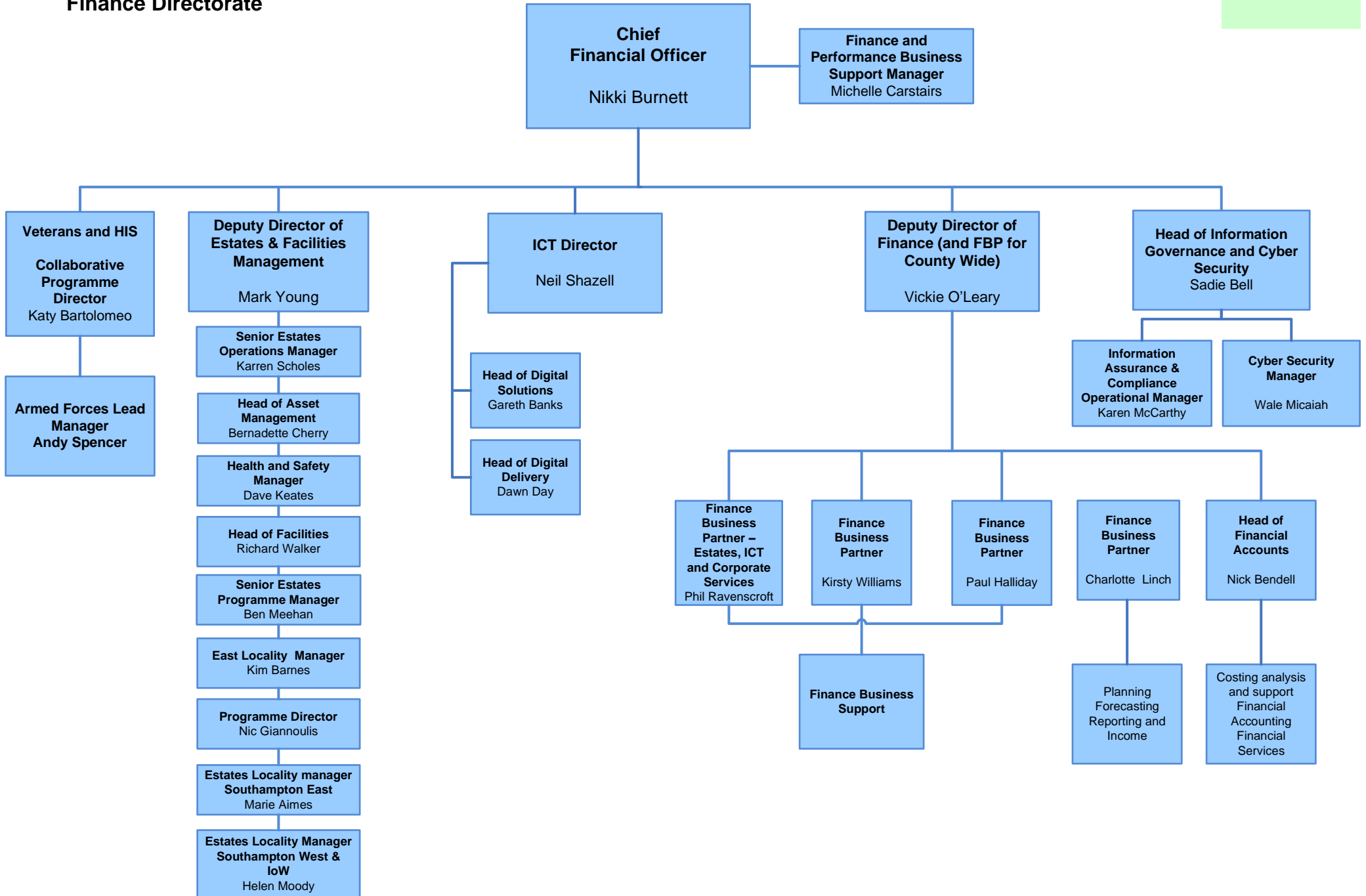


Statutory roles

Sponsors

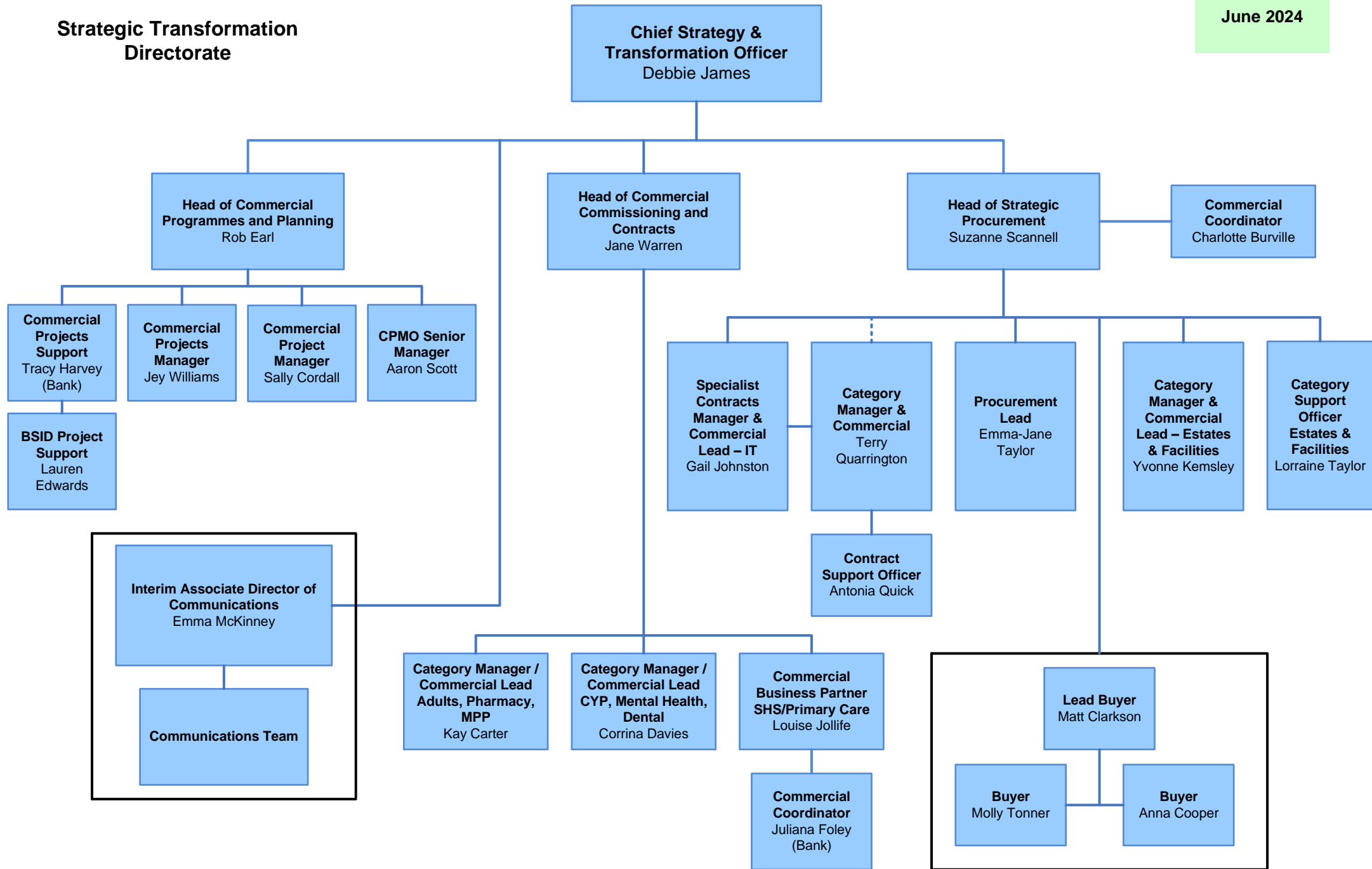
# Finance Directorate

June 2024



# Strategic Transformation Directorate

June 2024



People Directorate

June 2024

**Acting Chief People Officer**  
Sorrelle Ford

**Business Manager**  
Tina King

**PA**  
Katherine Moncaster

**Associate Director EDIB**  
Anna Rowen

**Associate Director – Occupational Health and Wellbeing**  
Hilary Todd

**Associate Director – People Partnering**  
Sorrelle Ford

**Workforce and OD Transformation Programme Director**  
Shani Davies

**Clinical Business Manager**  
Mo Middleton

**Occupational Health & Wellbeing Manager**  
Sarah Baker

**Head of People Operations**  
Martin Jones

**Head of Pay and Reward**  
Gemma Bulloch

**Head of People – Southampton, Primary Care/MPP, Corporate and People Practices**  
Jo Charlton-Smith

**Head of People – Portsmouth, FM and Estates, Medical and Dental**  
Gemma Pegram

**Head of People – County Wide, Childrens and Workforce Intelligence**  
Valentine Chiguware

**HR Continuous Improvement Manager**  
Sonja MacQueen

**Head of Learning and Development**  
Emma Lampard

Bank, ESR and Rostering  
Resourcing and Attraction  
International Recruitment

**People Partner Corporate**  
Liz Mansbridge

**Assistant People Partner**  
Ella Harvey (on secondment)

**People Partner – People Practices**  
Vicky Butler

**Senior People Partner – Childrens Services**  
Deb Spreadbury

**People Partner County Wide**  
Angelique Umuhoza

**Assistant People Partner**  
Ben Mahoney

Apprenticeships  
Leadership and Development  
Organisational Development (OD)  
LMS  
L&D Partners

**Head of EDIB System Wide**  
Leon Herbert

**EDIB Business Support Officer**  
Julie Marley

**EDIB Strategic and Operational Partner Staff Networks**  
Elton Dzikiti

**EDIB Assistant Network Partner**  
Deborah Somerville (on secondment) vacancy

**EDIB Strategic and Operational Partner**  
Debbie Robinson

**EDIB Education and Awareness Partner (Bank)**  
Pascal Matthias

**People Partner Southampton & Primary Care, Medical and Dental Workforce**  
Emily Cairns

**Interim People Partner**  
Claire Brown

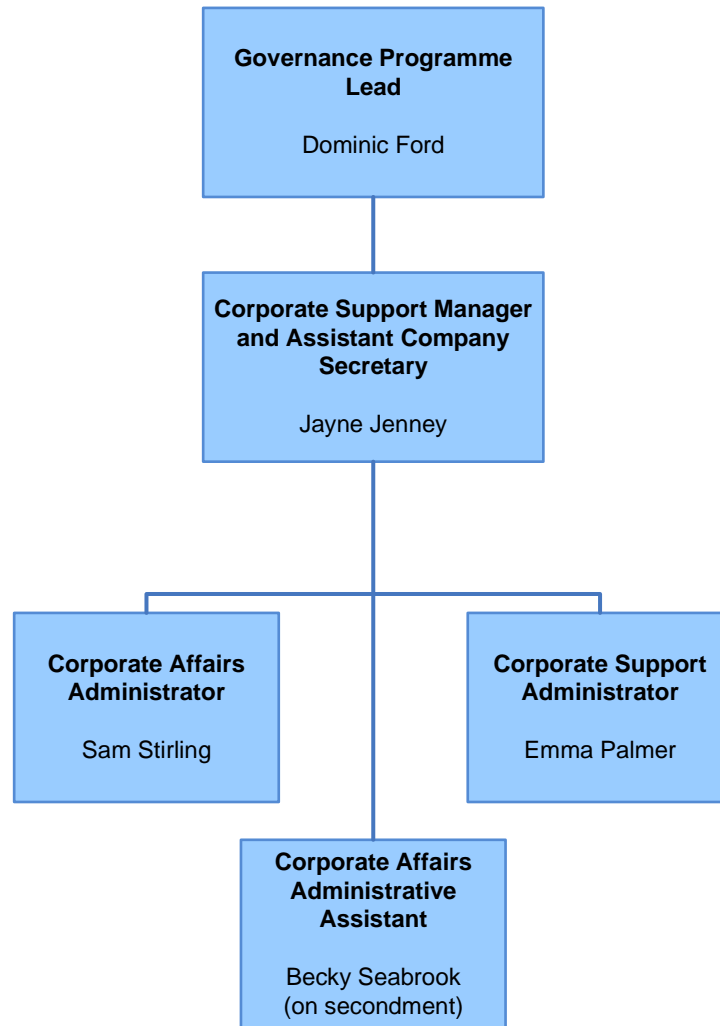
**People Partner Mental Health Services, Medical and Dental Workforce**  
Hannah Leeke

**People Partner Adults Services, Portsmouth**  
Georgia Durban

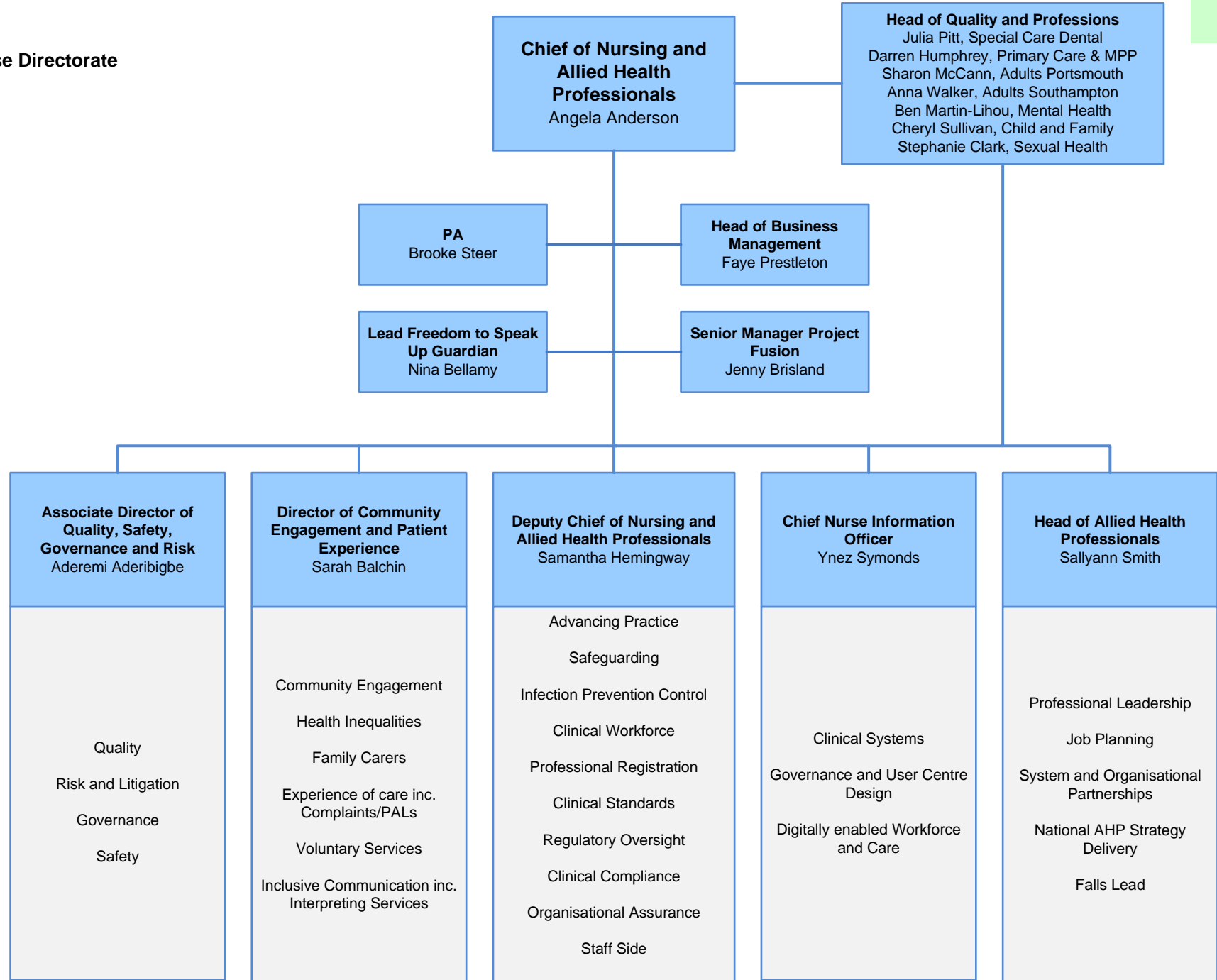
**People Partner Estates and Facilities**  
Sally Moir

# Corporate Affairs Team

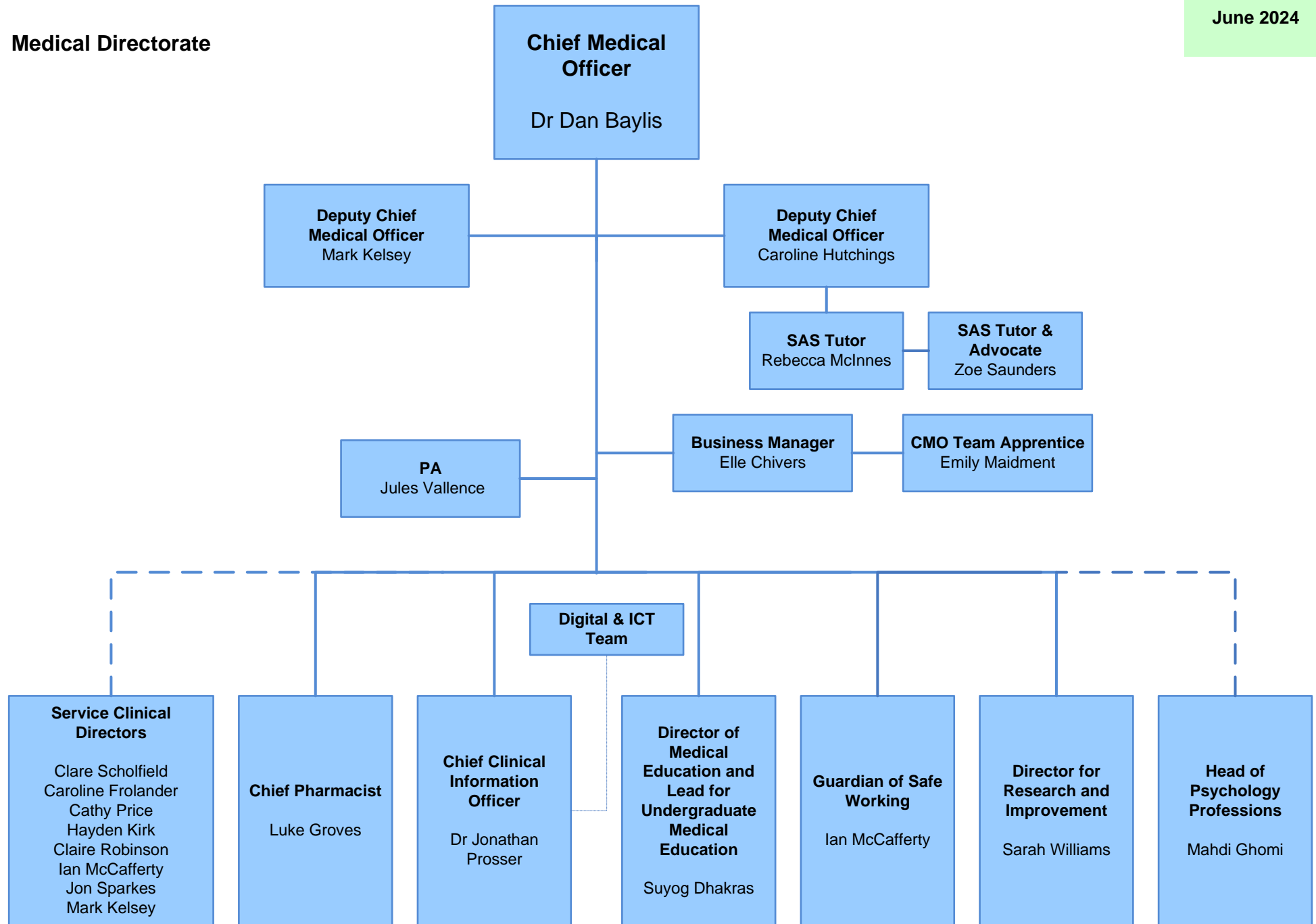
June 2024



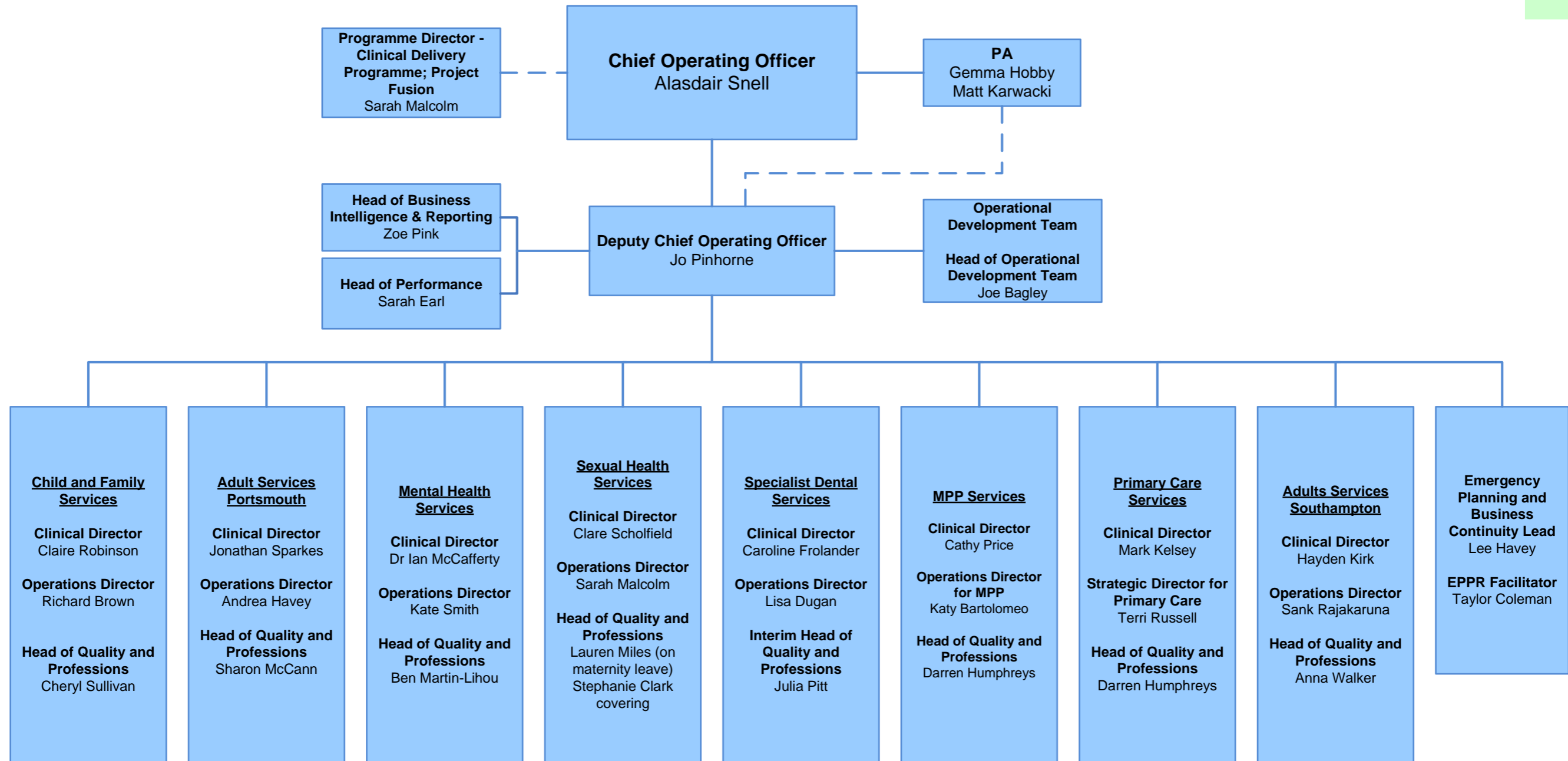
Chief Nurse Directorate



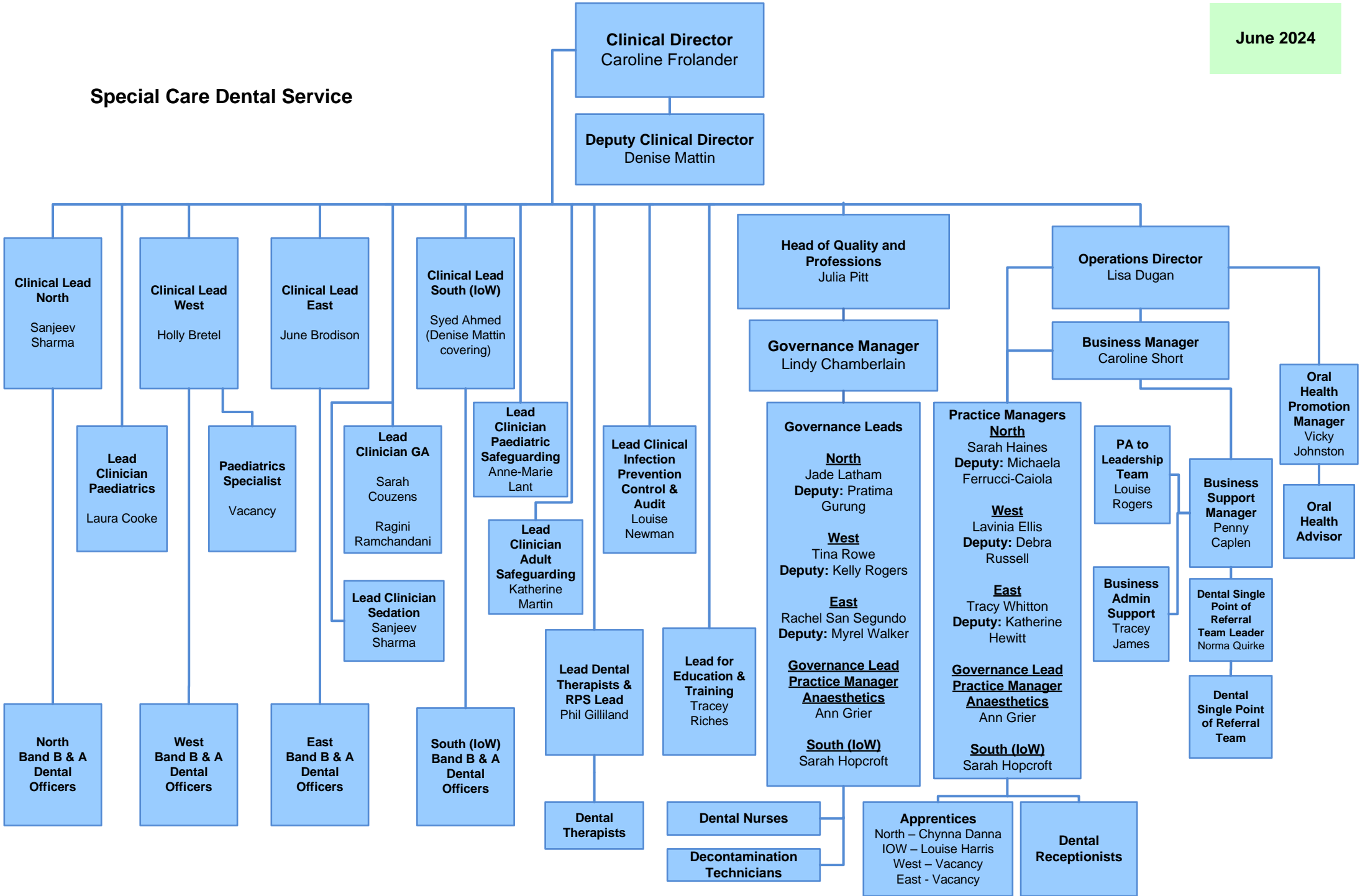
Medical Directorate





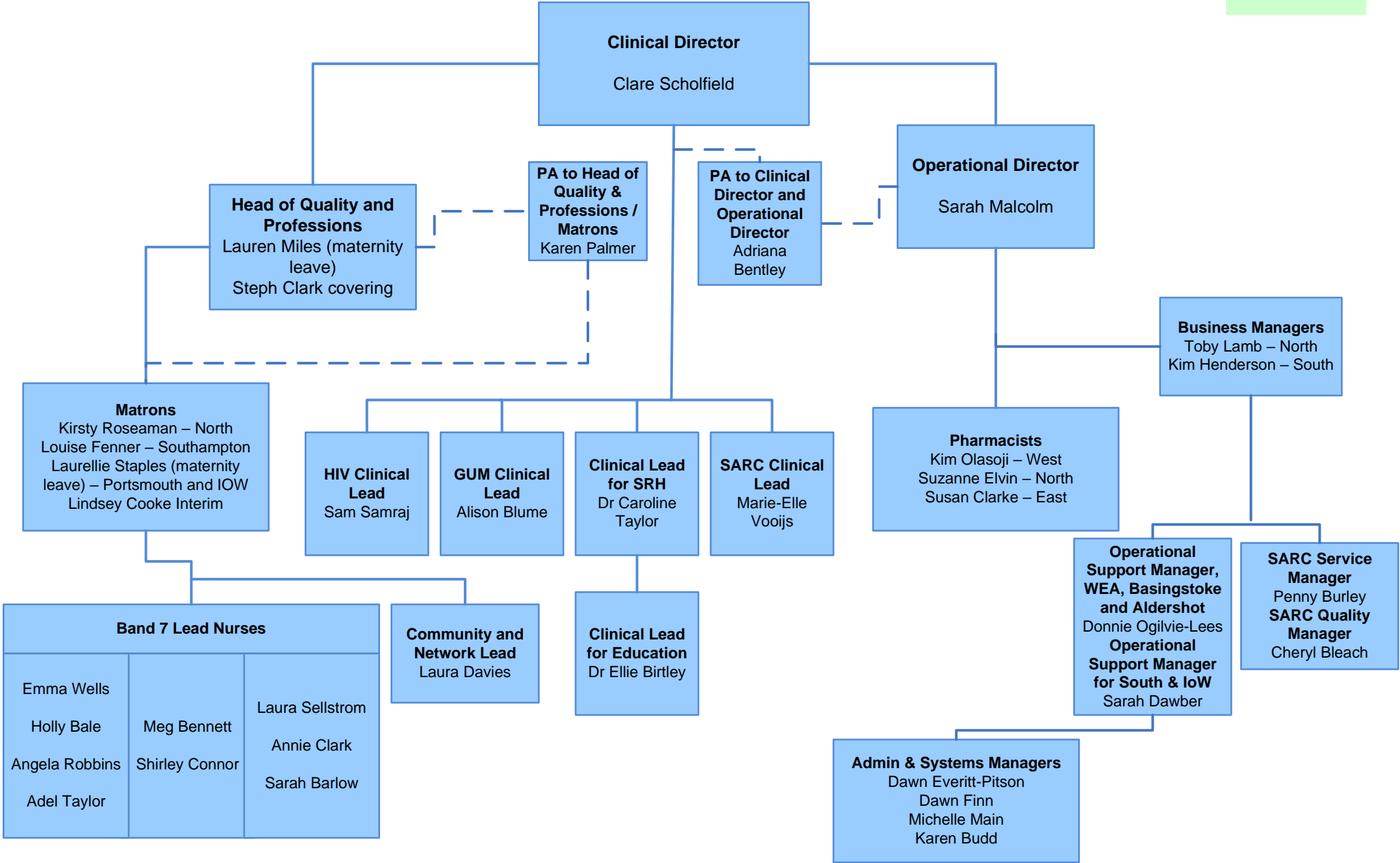


# Special Care Dental Service



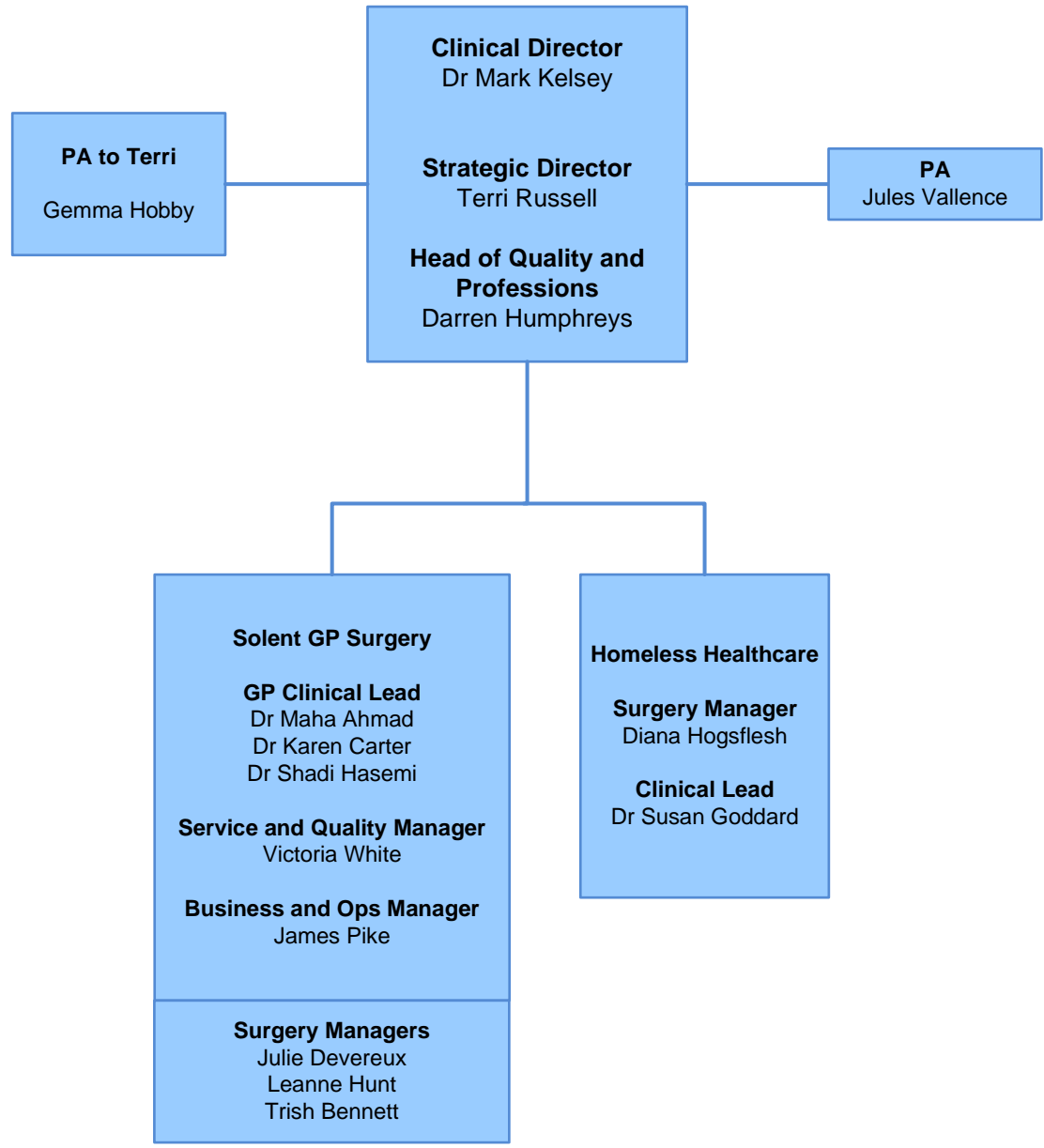
**Sexual Health Services**

June 2024



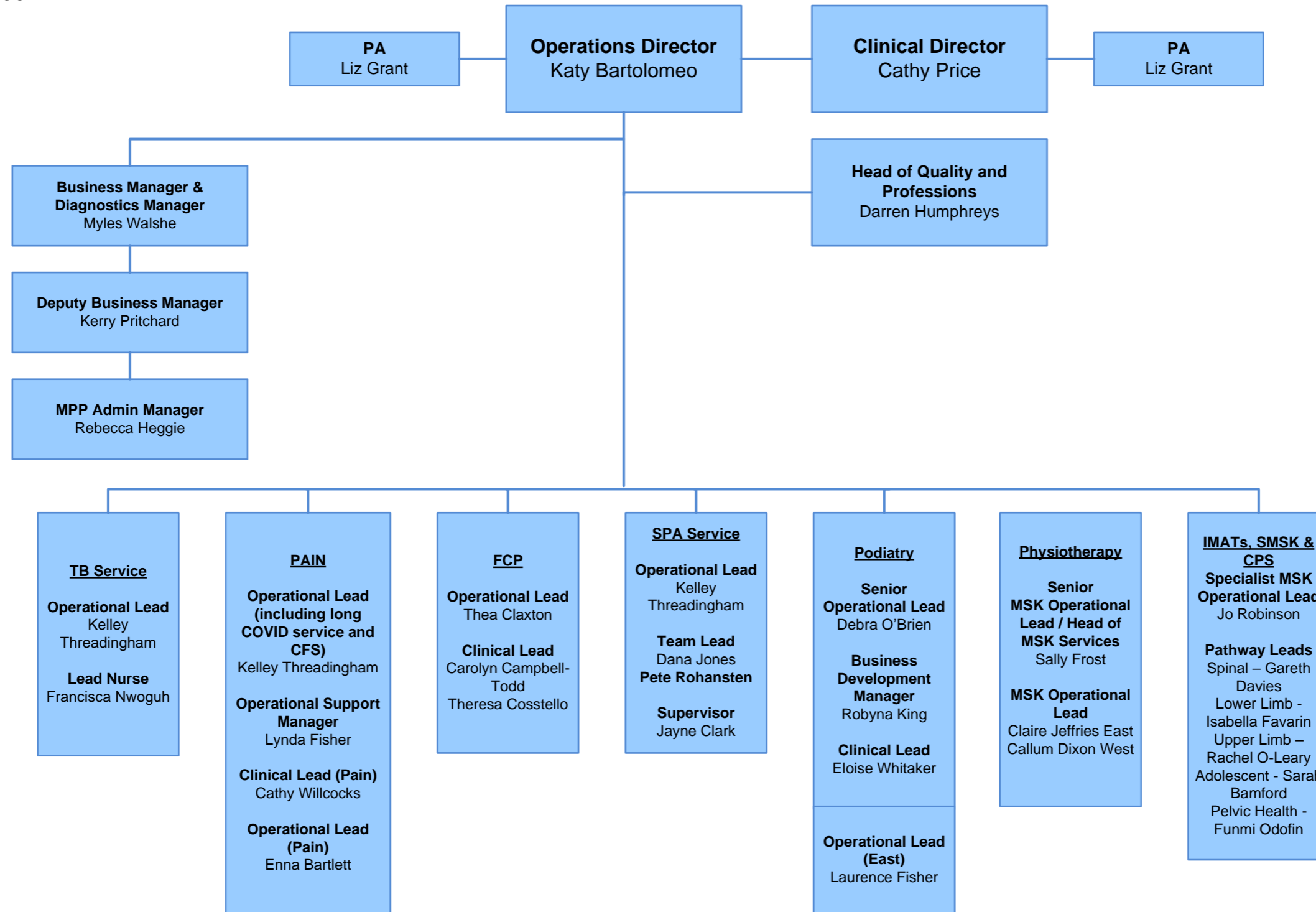
# Primary Care Service

June 2024



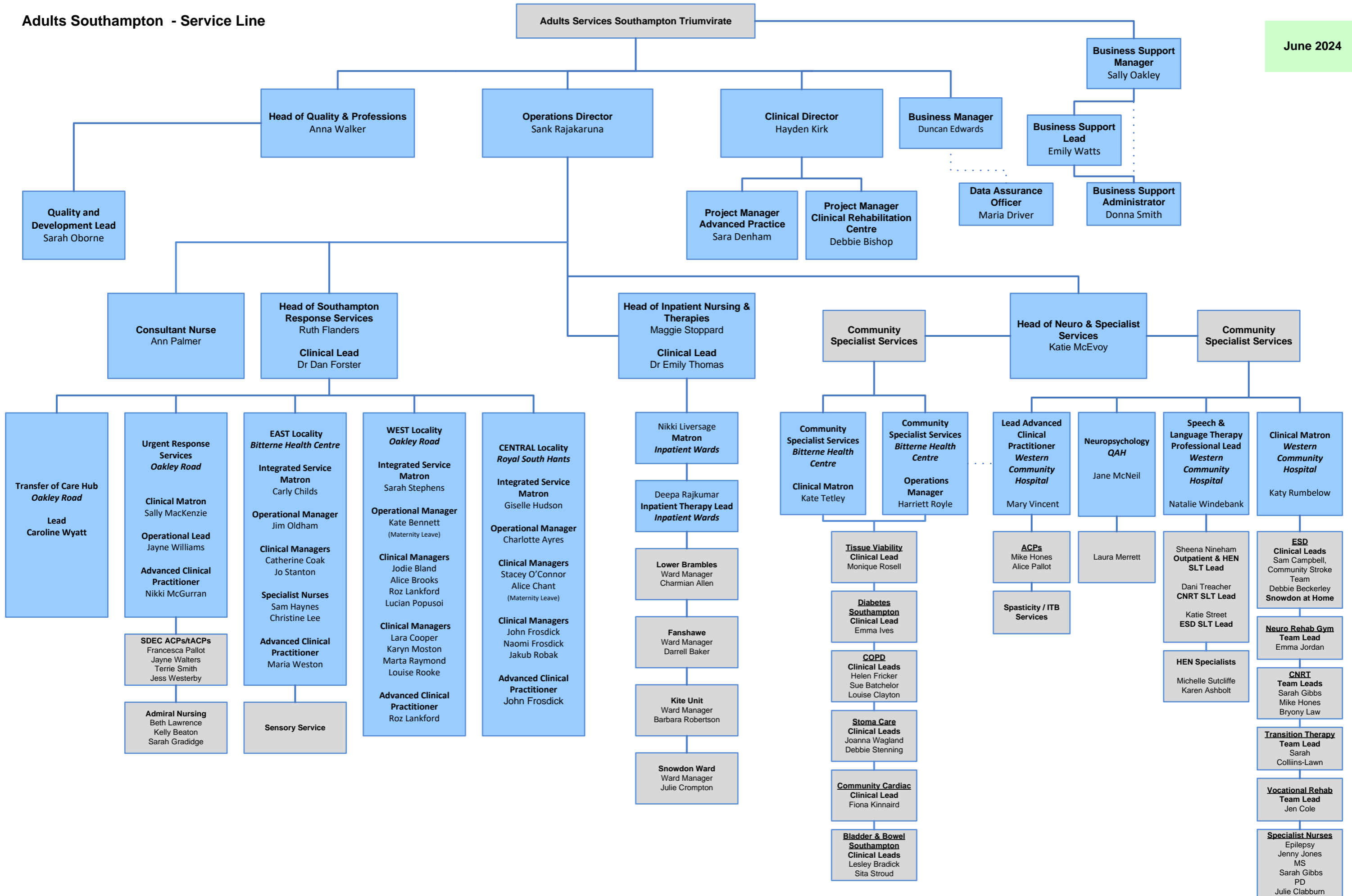
**MSK, Podiatry and Pain  
(MPP) Service**

June 2024



Adults Southampton - Service Line

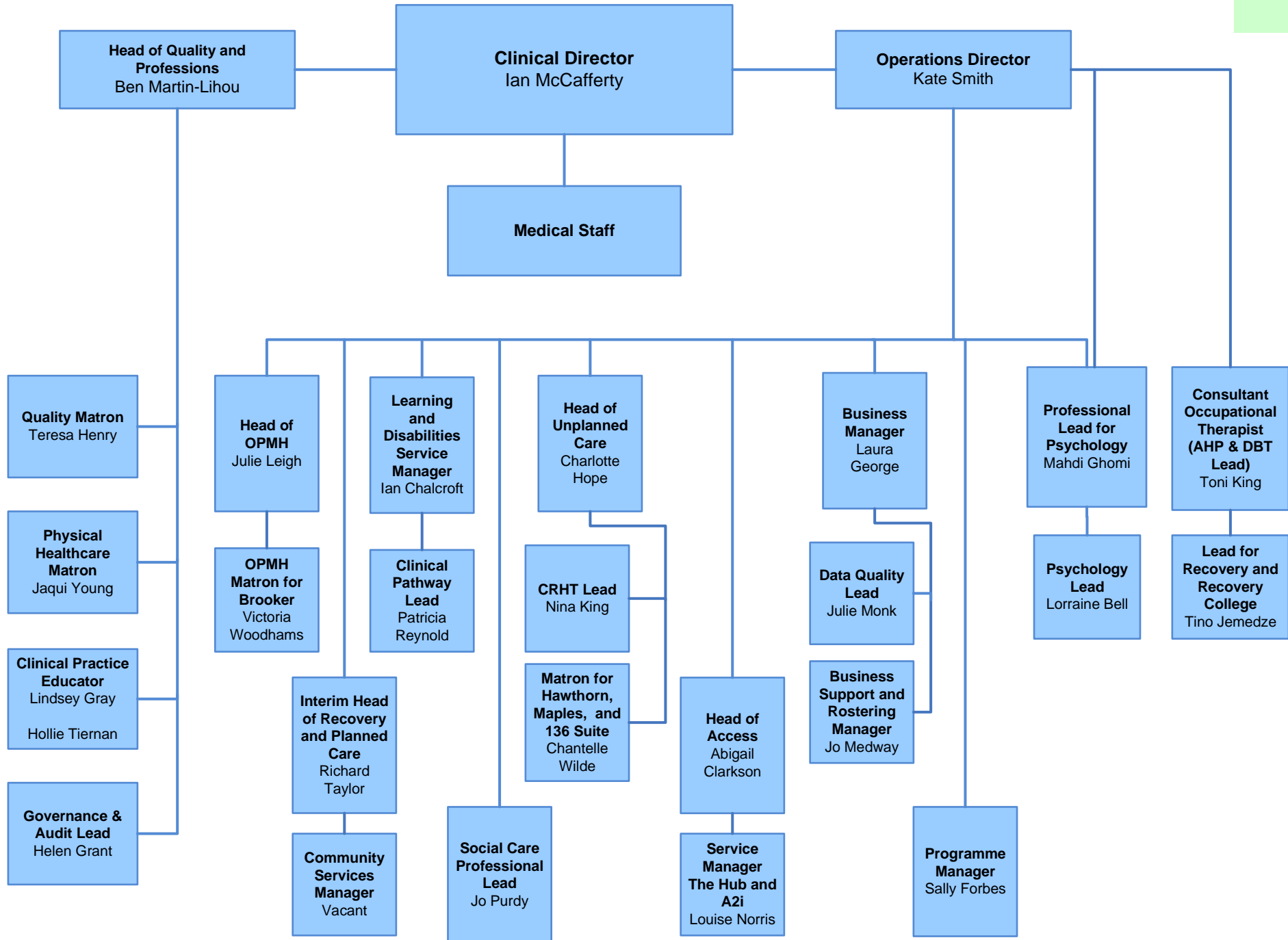
June 2024





Mental Health - Service Line

June 2024





# Child & Family Services

June 2024

